

Railway connection:



Roadway connection:



MORAVIAN – SILESIA DEVELOPMENT ZONE:
ATTRACTIVE OPPORTUNITY FOR INVESTMENTS

- three attractive parks (František II, Dukla, Barbora) in one development concept
- located in the center of the triangle created by Ostrava, Karviná and Havířov
- more than 1.2 million people within one hour of transport (cca 5 mil. within 100 km radius)
- a very wide choice of investment opportunities
- mutual proximity of the three areas – important operational synergies

Competitive advantages of the Moravian - Silesian Region

- strategic location near Poland and Slovakia, and their adjacent potential
- international multimodal transport hub
- International Airport Leoš Janáček in Ostrava-Mošnov (suitable for landing large commercial aircraft)
- availability of sufficiently skilled and educated workforce

Attractive investment incentives - support from both regional and state level

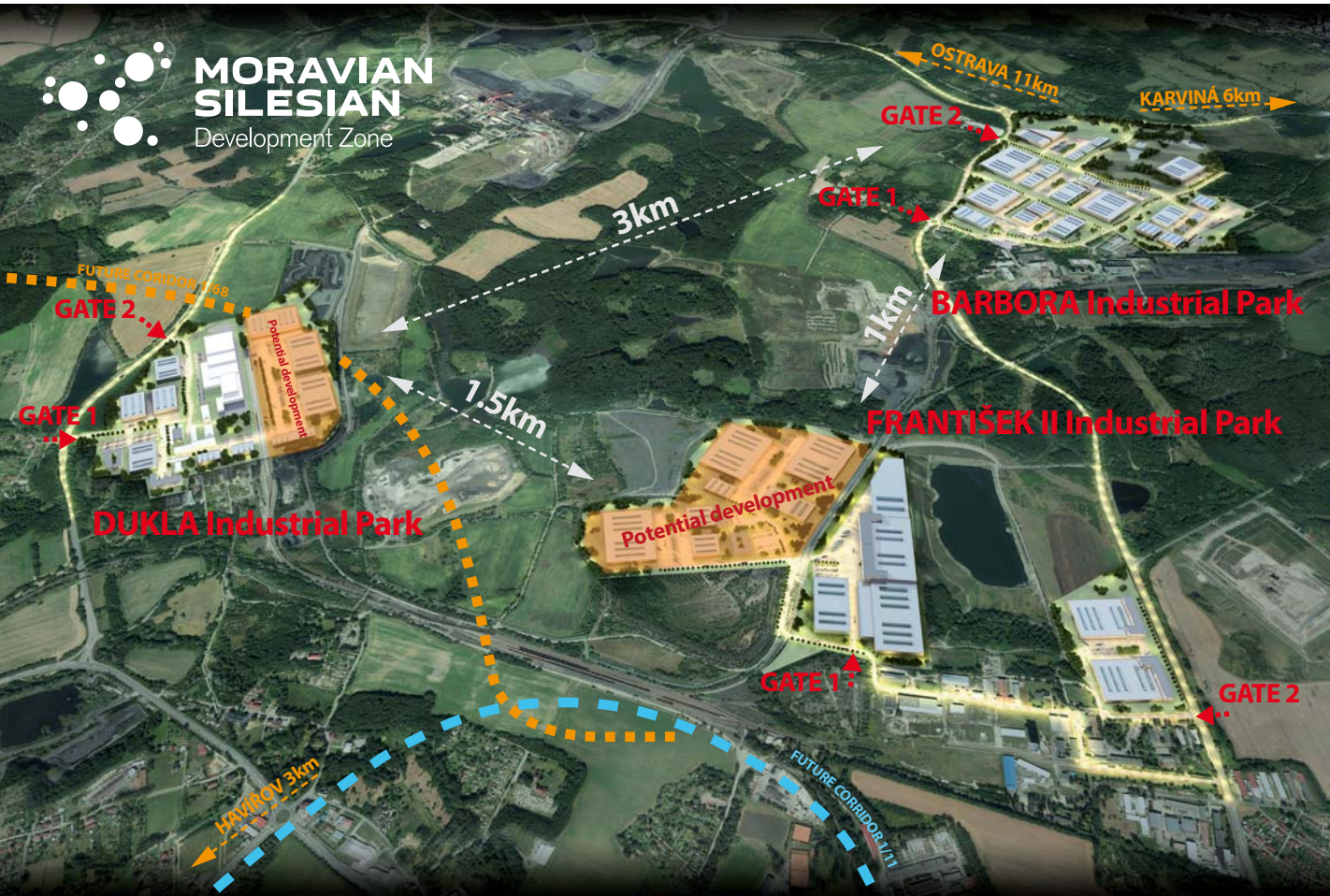
- financial incentive for each job created
- tax relief
- direct financial support for the acquisition of infrastructure and equipment
- close cooperation between the commercial and public sectors, responsive and flexible approach
- political support from municipalities and government of the Czech Republic

Education and research, the latest technology

- 32,000 students within six colleges and universities, certified schools teaching in English (1st International School of Ostrava)
- dynamic growth in research, development, innovation and advanced technologies

Improving living environment

- advanced technical, commercial, educational and social infrastructure
- a wide range of leisure activities



Multitude of foreign and local investors already successfully operating in the region

(e.g.: Hyundai Motor Manufacturing Czech, Hyundai Mobis, ABB ČR, Bang & Olufsen, Brembo Czech, Brose CZ, Continental Automotive Czech Republic, CTP, CTS Czech Republic, Cromodora Wheels, Gebrüder Weiss, GE Money, Goodyear, Grupo Antolin, HB Reavis, HP-Pelzer, ITT Holdings Czech Republic, Mahle Behr, Mölnlycke Health Care, Pegatron Czech, Plakor Czech, Siemens, SungWoo Hitech, Tatra Trucks, Tieto Czech, Visteon-Autopal)

The Region in Facts and Figures*

Population	nearly 1.25 mil.
Population within 100 km	5 mil.
The region's share on GDP of the Czech Republic	9.8 %
GDP per capita	12,460 EUR
Unemployment rate	9.8% (12/2014)
Private investment in the region (1993 - 2012)	6.87 billion EUR

* Source: Czech Statistical Office and internal sources

More information about the benefits of investing in the Moravian-Silesian Region: <http://www.invest-msr.com/en/>



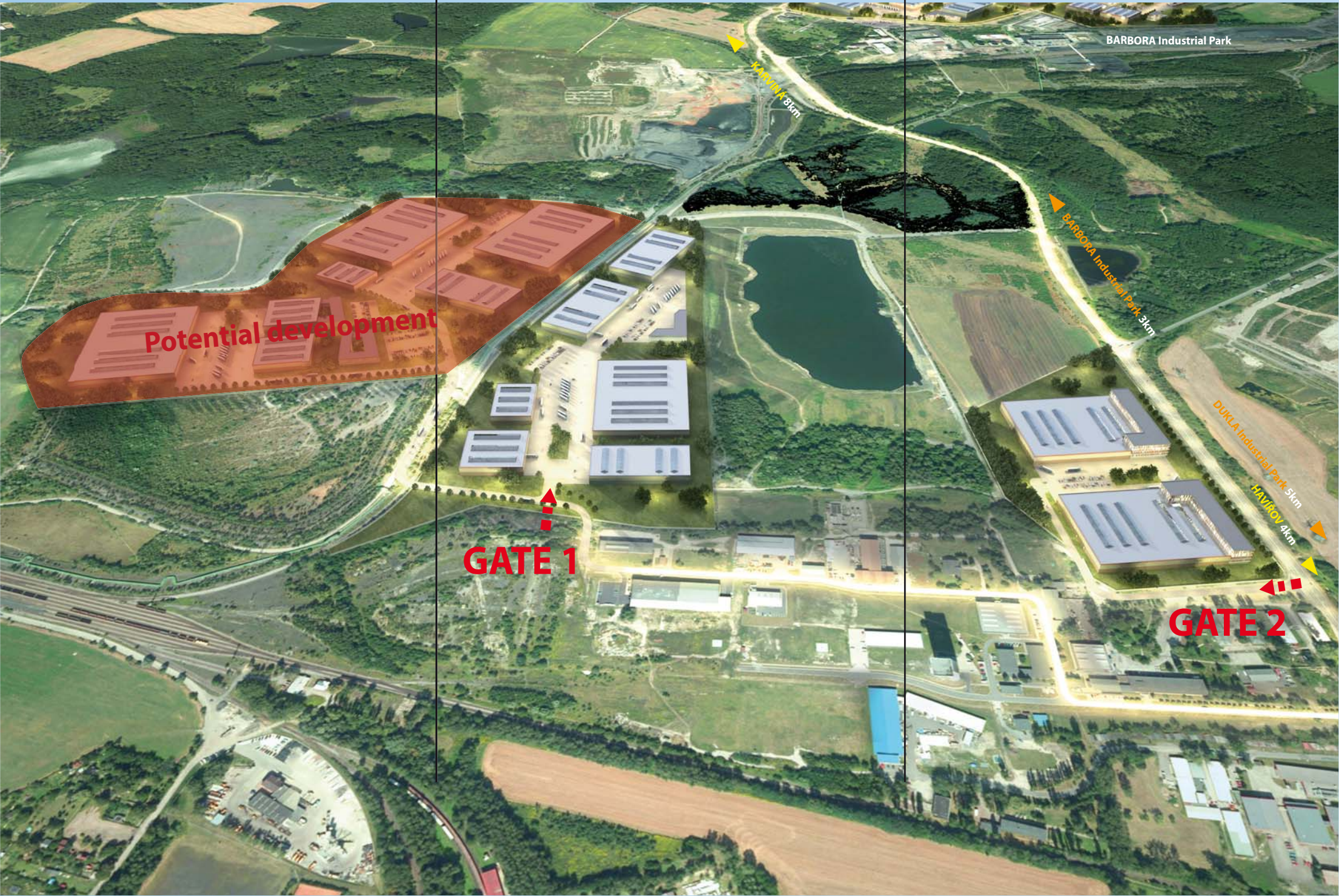
MORAVIAN – SILESIA DEVELOPMENT ZONE:
ATTRACTIVE OPPORTUNITY FOR INVESTMENTS



František II



Project František II - visualization



František II

Location:
Horní Suchá town, 5 km from the center of Havířov

Surface area:
30 ha + 30 ha (future potential)

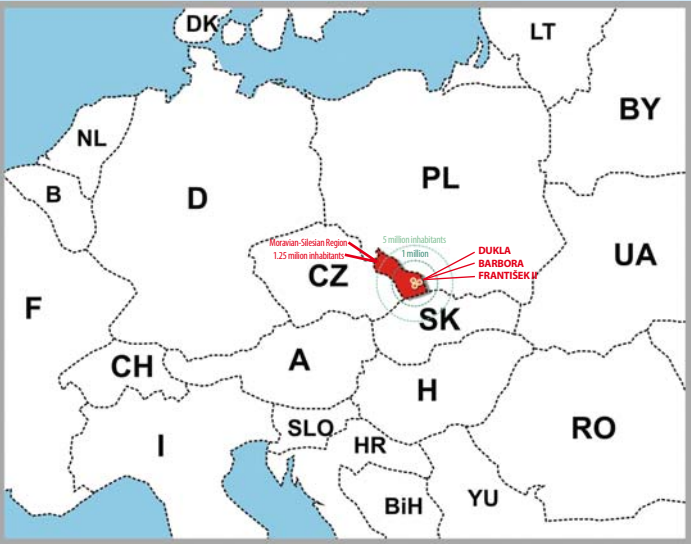
- Area characteristics:**
- the area extends an existing industrial zone owned by the municipality of Horní Suchá (currently there are more than 25 companies with about 300 employees located in the zone; awarded "Brownfield of the Year" in 2009 in a competition organized annually by the Czech Ministry of Industry and Trade and CzechInvest)
 - master plan zoning – light industry

- Transportation:**
- excellent access – transport arteries II/475 + II/474
 - railway corridor in vicinity (4 km)
 - D1 highway (16 km)
 - International Airport Leoš Janáček in Ostrava-Mošnov (36 km)

- Technical infrastructure:**
- electric power available from current trafostation
 - gas line medium pressure
 - water DN 150 – 14 l /sec.
 - sewage pipe DN 300

Opportunities are available to link accessory office and storage needs of investors, in this location and in others nearby, within the Aseal Group real estate portfolio.

Investors in the existing zone:
Sandvik Mining and Construction, CENTR GROUP, Exelsior Group, FAL Services, REMAX – stav, ROBOTSYSTEM, and more



CONTACT
Aseal Land, s. r. o.
Gregorova 2582/3
702 00 Ostrava, Czech Republic
Phone.: +420 596 262 222
E-mail: projekty@asental.eu
www.asental.eu



CONTACT
Horní Suchá Municipality
Sportovní 2/3
735 35 Horní Suchá, Czech Republic
Phone: +420 596 425 645-6
E-mail: sekretariat@hornisucha.cz
www.hornisucha.cz